

Take charge of your energy future.

Introducing the Evolve - a versatile, residential powerhouse for homes both large and small. Evolve is fully loaded to deliver your preferred energy savings program when installed in parallel with a solar PV system. Automated backup power capability ensures your essential home loads keep running even when the power goes out.

Simple, modular installation with new or existing solar PV systems.

The Evolve is easily coupled to new or existing solar installations using your preferred solar inverter brand. The modular wall-mount format maximizes installation flexibility without consuming valuable space.

When it comes to energy resiliency, one size does not fit all.

Evolve's expandable battery capacity means essential home loads can be powered through multi-day grid outages. Black-start capable for overcast days.

Features

Base model: 5 kW power, 13 kWh storage

Expandable storage: 26 kWh / 39 kWh

Lithium batteries with 10+ years performance guarantee.

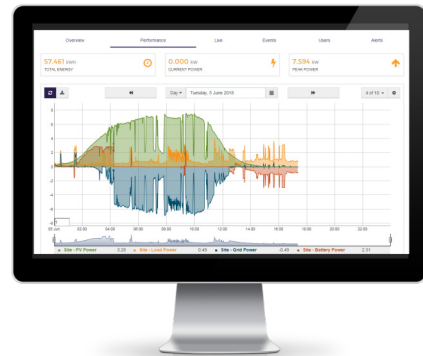
Automated backup power with solar charge and black start capability.

Daily energy savings programs include solar time-of-use and solar self-consumption.

User interface includes consumer and fleet level monitoring software.



EGUANA



All eyes on your energy consumption.

Track your generation, storage and consumption data all under one dashboard. Customizable battery management alerts allow you to make decisions about your energy consumption to save you money.



Model
EVOLVE ESS AU
5 kW / 13 kWh

AC RATINGS

Rated output apparent power	[kVA]	5.0
Rated voltage (range)	[V]	230
Rated frequency (range)	[Hz]	50
Number of phases		1
Rated output current	[A]	21.7
Maximum overcurrent protection	[A]	60.0
Power factor, nominal (range)	> 0.99 (0.8 lead/lag to 1.0)	
DC ground fault monitoring		Yes

Distributed by:

BATTERY RATINGS - MODULE DATA

* System capacity is from two to six modules. See ordering information below.

Manufacturer / Model / Chemistry	LG Chem / EM048126P3S7 / Lithium ion, Nickel Manganese Cobalt	
Rated voltage (range) / Max input DC voltage	[Vdc]	48 (42.0 to 58.8) / 66
Maximum charge & discharge current	[Adc]	63.0
Rated capacity (DC) / Usable capacity (AC)	[kWh]	6.5 (6.2)
Depth of discharge	[kWh]	95%
Cycle life (metered energy throughput)	[MWh]	19.2

BACKUP POWER RATINGS

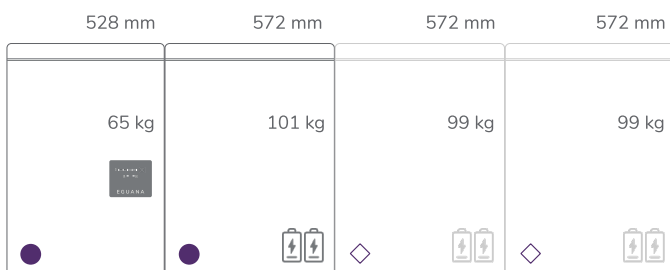
Rated output power	[kVA]	5.0
Surge rating (3+ battery modules required)	[%]	120 (30 min), 170 (5 sec)
Transfer power interrupt time: to backup / to grid	[s]	4.0 / 0.0

GENERAL RATINGS

Mounting method		Wall-mount
Ambient operating temperature range	[°C]	-10 to +45
Recommended temperature range	[°C]	15 to 30
Relative air humidity	[%]	95
Inverter max efficiency / ESS roundtrip efficiency	[%]	96 / > 86.5
Protection degree		IP34
Protective class (I, II, or III)		Class 1
Over-voltage category (OVC I, II, III, or IV)		OVC III
Active anti-islanding method		Sandia frequency shift
Lightning protection		IEEE 62.41.2, location category B, low exposure
Galvanic Isolation		Transformer
Cooling - PCS / Battery		fan (thermostat) / natural convection
Energy consumption, standby (operating)	[W]	6 (30)
Display		LED: battery status, PCS status, service status
EMS communication		Ethernet, LAN
DRED device support		DRM 0 to DRM 9

CERTIFICATIONS & WARRANTY

EMC	IEC 61000-6-2, IEC 61000-6-3
Safety	IEC 62109-1/-2, IEC 62477-1, IEC 62040, G59/3-2
Utility interface	AS/NSZ 4777.2: 2015, VDE DIN-AR-4105: 2011-08
Warranty / battery performance guarantee	10 year / 19.2 MWh throughput, 60% capacity, pro-rated



Ordering Information

Model

● Evolve ESS AU

◇ Evolve 0013

Capacity Selector, kWh

13 ●

26 ● ◇

39 ● ◇ ◇