



# EGUANA

## Take charge of your energy future.

Introducing the Evolve - a versatile, residential powerhouse for homes both large and small. Evolve is fully loaded to deliver your preferred energy savings program when installed in parallel with a solar PV system. Automated backup power capability ensures your essential home loads keep running even when the power goes out.

## Simple, modular installation with new or existing solar PV systems.

The Evolve is easily coupled to new or existing solar installations using your preferred solar inverter brand. The modular wall-mount format for both indoor or outdoor use maximizes installation flexibility without consuming valuable space.

## When it comes to energy resiliency, one size does not fit all.

Evolve's expandable battery capacity means essential home loads can be powered through multi-day grid outages. Black-start capable for overcast days.

## Features

---

Base model: 5 kW power, 13 kWh storage

Expandable storage: 26 kWh / 39 kWh

Outdoor rated.

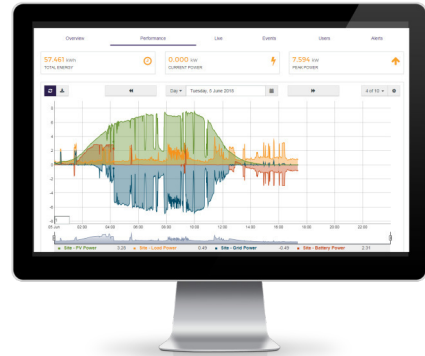
Lithium batteries with 10+ years performance guarantee.

Automated backup power with solar charge and black start capability.

Daily energy savings programs include solar time-of-use and solar self-consumption.

Fleet management tools include performance, diagnostic, email service alarms.

---



## All eyes on your energy consumption.

Track your generation, storage and consumption data all under one dashboard. Customizable battery management alerts allow you to make decisions about your energy consumption to save you money.



Model  
**EVOLVE 0513**  
5 kW / 13 kWh

## AC RATINGS

Rated power, maximum charge and discharge	[kVA]	5.0
Rated voltage (range)	[V]	230
Rated frequency (range)	[Hz]	50
Number of phases		1
Rated current, maximum charge and discharge	[A]	21.7
Maximum overcurrent protection	[A]	60.0
Power factor, nominal (range)	> 0.99 (0.8 lead/lag to 1.0)	
DC ground fault monitoring		Yes

Distributed by:

## BATTERY RATINGS - MODULE DATA

\* System capacity is from two to six modules. See ordering information below.

Manufacturer / Model / Chemistry	LG Chem / EM048126P3S7 / Lithium ion, Nickel Manganese Cobalt	
Rated voltage (range)	[Vdc]	48 (42.0 to 58.5)
Maximum charge & discharge current	[Adc]	63.0
Rated capacity (DC) / Usable capacity (AC)	[kWh]	6.5 (6.2)
Depth of discharge	[kWh]	95%
Cycle life (metered energy throughput)	[MWh]	19.2

## BACKUP POWER RATINGS

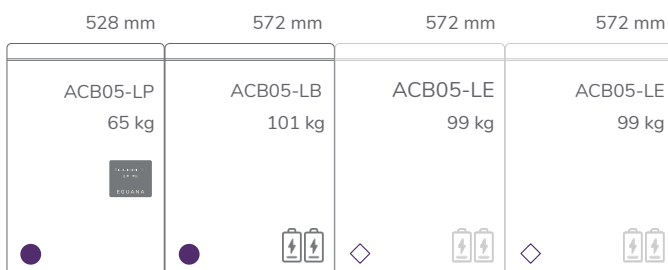
Rated output power	[kVA]	5.0
Surge rating (3+ battery modules required)	[%]	120 (30 min), 170 (5 sec)
Transfer power interrupt time: to backup / to grid	[s]	4.0 / 0.0

## GENERAL RATINGS

Mounting method	Wall-mount	
Ambient operating temperature range	[°C]	-10 to +45
Recommended temperature range	[°C]	15 to 30
Relative air humidity	[%]	95
Roundtrip efficiency	[%]	> 86.5
Protection degree	IP34	
Protective class (I, II, or III)	Class 1	
Over-voltage category (OVC I, II, III, or IV)	OVC III	
Active anti-islanding method	Sandia frequency shift	
Lightning protection	IEEE 62.41.2, location category B, low exposure	
Galvanic Isolation	Transformer	
Cooling - PCS / Battery	fan (thermostat) / convection	
Energy consumption, standby (operating)	[W]	6 (30)
Display	LED: battery status, PCS status, service status	
EMS communication	Ethernet, LAN	
DRED device support	DRM 0 to DRM 9	

## CERTIFICATIONS & WARRANTY

EMC	IEC 61000-6-2, IEC 61000-6-3
Safety	IEC 62109-1/-2, IEC 62477-1, IEC 62040, G59/3-2
Utility interface	AS/NSZ 4777.2: 2015, VDE DIN-AR-4105: 2011-08
Warranty / battery performance guarantee	10 year / 19.2 MWh throughput, 60% capacity, pro-rated



## Ordering Information

Model	Parts
● Evolve 0513	ACB05-LP + ACB05-LB
◇ Evolve 0013	ACB05-LE
Capacity Selector, kWh	
13 ●	26 ● ◇ 39 ● ◇ ◇